

QUICK MARKING TOOL

- Marking workpieces in seconds
- on a wide variety of geometries independent of the workpiece diameter
- changing marking text thanks to interchangeable marking segments
- for machines with small installation space
- marking up to a shoulder

MARKING TOOL



PRODUCT FEATURES

- modular shank design
- top edge of shank = centre height
- set screws in shank for correcting alignment
- hardened pin
- exact positioning of the marking on the circumference of the workpiece
- center height corresponds to the first marking point
- marking position individually adjustable

SPARE PARTS QBW 432

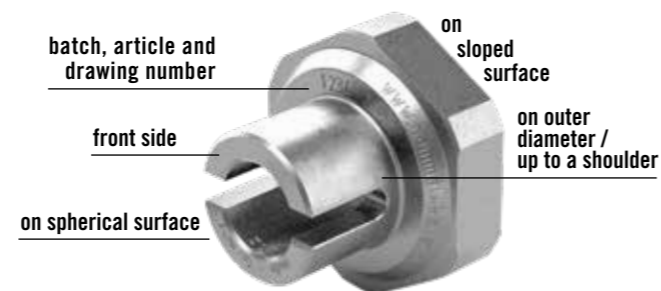
E-KIT - small version

Item no.	Direction	
22BHR0714	right	

E-KIT - big version

Item no.	Direction	
22BHR0713	right	

MARKING THE MOST DIFFERENT WORKPIECE GEOMETRIES



SET QBW 432

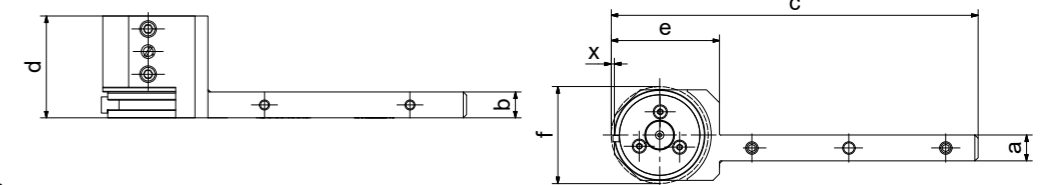
for QBW 432-30 - small version

SET CONSISTING OF:

- 1 x base shank (solid shank version) tool 432-08R
- 1 x shank adapter 10 mm x 10 mm
- 1 x shank adapter 12 mm x 12 mm
- 1 x shank adapter 16 mm x 16 mm
- 1 x start and end segment
- in high-quality case

Available from stock

Item no.	Model	Dimensions [mm]						
		a	b	c	d	e	f	x
32000360	432-08R300818	8	8	113.5	31.5	33.5	30	1
	with shank adapter 10 x 10 mm	10	10	113.5	31.5	33.5	30	1
	with shank adapter 12 x 12 mm	12	12	113.5	31.5	33.5	30	1
	with shank adapter 16 x 16 mm	16	16	113.5	31.5	33.5	31	1



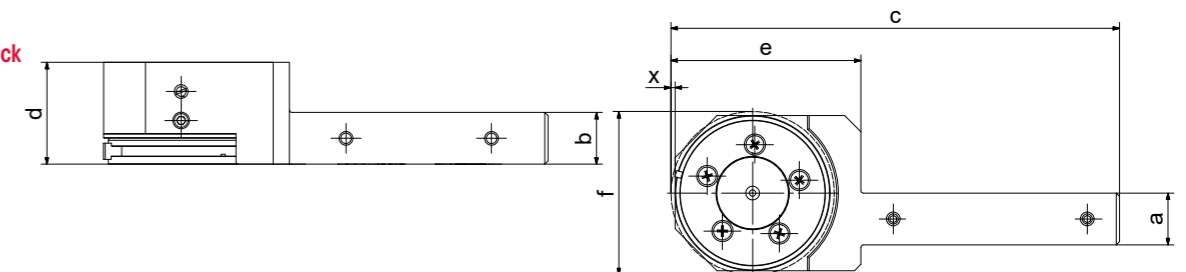
für QBW 432-50 - große Version

SET CONSISTING OF:

- 1 x base shank (solid shank version) tool 432-16R
- 1 x shank adapter 20 mm x 20 mm
- 1 x shank adapter 25 mm x 25 mm
- 1 x start and end segment
- in high-quality case

Available from stock

Item no.	Model	Dimensions [mm]						
		a	b	c	d	e	f	x
32000355	432-16R500838	16	16	138.5	31.5	58.5	50	1
	with shank adapter 20 x 20 mm	20	20	138.5	31.5	58.5	50	1
	with shank adapter 25 x 25 mm	25	25	138.5	31.5	58.5	50	1



APPLICATION EXAMPLE MARKING

MARK YOUR WORKPIECE IN SECONDS.



→ INTEGRATED INTO THE MACHINING PROCESS

INTERCHANGEABLE MARKING TEXT
MARKING SEGMENTS IMMEDIATELY
AVAILABLE: A-Z, 0-9, -/.

