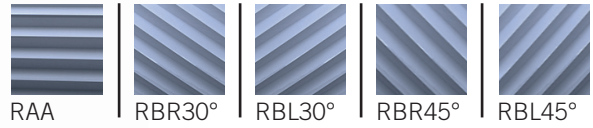


CUT KNURLING TOOL C601

DISCONTINUED MODEL
AVAILABLE UNTIL 2022-06-30



KNURLING PROFILE ON WORKPIECE (DIN 82):

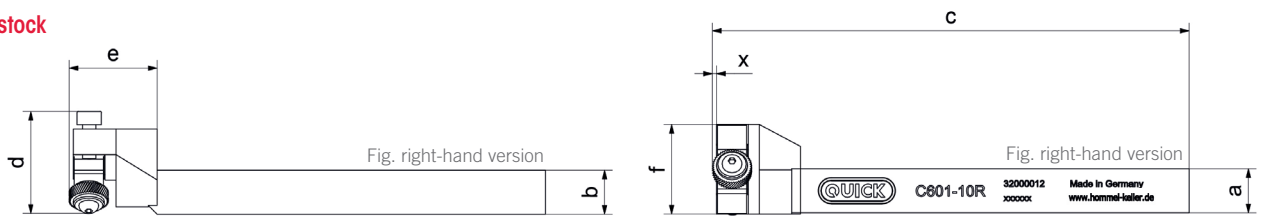


SELECTION OF KNURLING WHEELS (DIN 403):

RIGHT-HAND USE	BR30°	AA	—	BL15°	—
LEFT-HAND USE	BL30°	—	AA	—	BR15°

PRODUCT FEATURES	Item no. (right-hand version)	Item no. (left-hand version)	Model	Workpiece Ø [mm]	Knurling wheel (Ø x w x b) [mm]	Dimensions [mm]						
						a	b	c	d	e	f	x
<ul style="list-style-type: none"> developed for minimal installation space and maximum stability designed for smallest workpiece diameters user-friendly handling 	32000012 <input checked="" type="checkbox"/>	32000011	C601-10	1.5 – 12	8.9 x 2.5 x 4	10	10	108	23.5	20	20.3	0.8
	32000014 <input checked="" type="checkbox"/>	32000013	C601-12	1.5 – 12	8.9 x 2.5 x 4	12	12	108	23.5	20	22	0.8

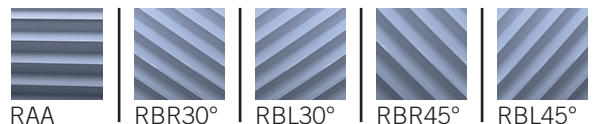
Available from stock



NEW CUT KNURLING TOOL C601



KNURLING PROFILE ON WORKPIECE (DIN 82):

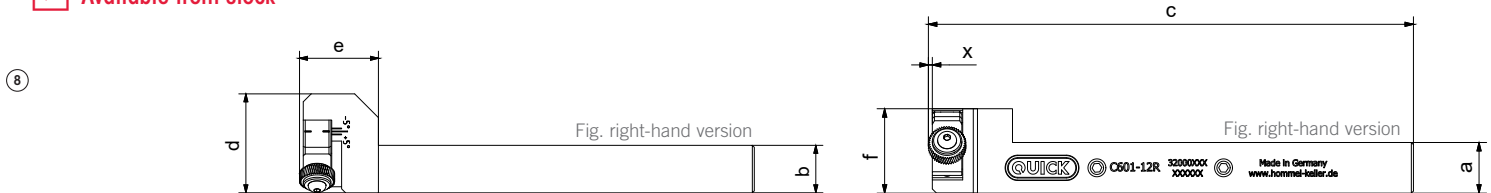


SELECTION OF KNURLING WHEELS (DIN 403):

RIGHT-HAND USE	BR30°	AA	—	BL15°	—
LEFT-HAND USE	BL30°	—	AA	—	BR15°

PRODUCT FEATURES	Item no. (right-hand version)	Item no. (left-hand version)	Model	Workpiece Ø [mm]	Knurling wheel (Ø x w x b) [mm]	Dimensions [mm]						
						a	b	c	d	e	f	x
<ul style="list-style-type: none"> optimized for swiss type lathe applications knurl carrier are flush with outer edge of shank smaller design - reduced height of the tool head optimized tool positioning: upper edge of shank = center height improved stability through optimization of the interfaces designed for smallest workpiece diameters user-friendly handling 	32000357 <input checked="" type="checkbox"/>	32000356	C601-08	1.5 – 12	8.9 x 2.5 x 4	8	10	115	25	20	18	0.9
	32000319 <input checked="" type="checkbox"/>	32000318	C601-10	1.5 – 12	8.9 x 2.5 x 4	10	10	115	25	20	18	0.9
	32000291 <input checked="" type="checkbox"/>	32000292	C601-12	1.5 – 12	8.9 x 2.5 x 4	12	12	115	25	20	20	0.9
	32000293 <input checked="" type="checkbox"/>	32000294	C601-16	1.5 – 12	8.9 x 2.5 x 4	16	12	115	25	20	24	0.9
	32000358 <input checked="" type="checkbox"/>	32000359	C601-08	3 – 50	14.5 x 3 x 5	8	10	120	25	25	18	1.75
	32000289 <input checked="" type="checkbox"/>	32000288	C601-10	3 – 50	14.5 x 3 x 5	10	10	120	25	25	18	1.75
	32000028 <input checked="" type="checkbox"/>	32000243	C601-12	3 – 50	14.5 x 3 x 5	12	12	120	25	25	20	1.75
	32000023 <input checked="" type="checkbox"/>	32000022	C601-16	3 – 50	14.5 x 3 x 5	16	12	120	25	25	24	1.75

Available from stock

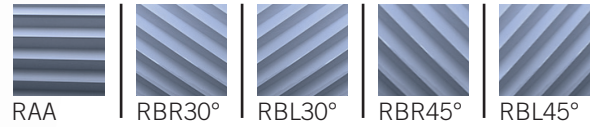


NEW

CUT KNURLING TOOL C601



KNURLING PROFILE ON WORKPIECE (DIN 82):



SELECTION OF KNURLING WHEELS (DIN 403):

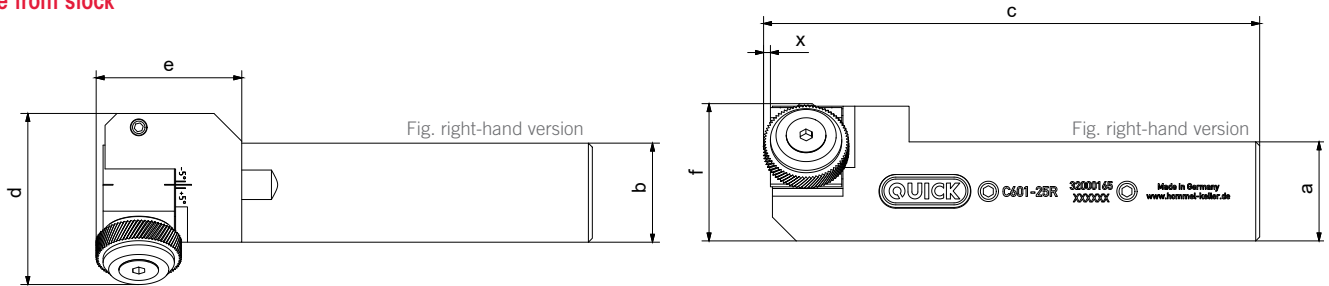
RIGHT-HAND USE	BR30°	AA	—	BL15°	—
LEFT-HAND USE	BL30°	—	AA	—	BR15°

PRODUCT FEATURES

- developed for minimal installation space and maximum stability
- designed for smallest workpiece diameters
- user-friendly handling

Item no. (right-hand version)	Item no. (left-hand version)	Model	Workpiece Ø [mm]	Knurling wheel (Ø x w x b) [mm]	Dimensions [mm]						
					a	b	c	d	e	f	x
32000032 <input checked="" type="checkbox"/>	32000093	C601-20	5 - 250	21.5 x 5 x 8	20	20	125	43,2	36,8	30	1.75
32000165 <input checked="" type="checkbox"/>	32000242	C601-25	5 - 250	21.5 x 5 x 8	25	25	125	43,2	36,8	30	1.75

Available from stock



SPARE PARTS C601

E-KIT C601 - NEW

Item no.	Knurling wheel (Ø x w x b) [mm]
22BHR0506	8.9 x 2.5 x 4
22BHR0507	14.5 x 3 x 5
22BHR0508	21.5 x 5 x 8

