



# MARKING TOOL SET 421


## Spring-return system



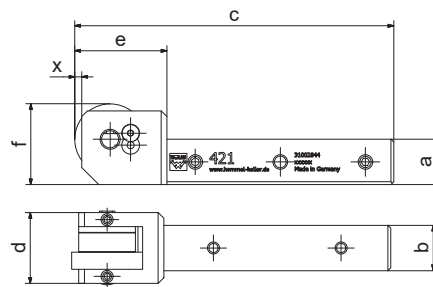
### PRODUCT FEATURES

- modular shank design
- top edge of shank = centre height
- set screws in shank for correcting alignment
- hardened pin
- exact positioning of the marking on the circumference of the workpiece
- Marking independent of workpiece diameter
- center height corresponds to the first marking point
- marking position individually adjustable
- sets in high quality packaging

Available from stock

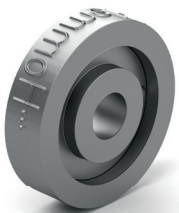
Item no.	Model / Sets (with shank adapter)	Size Marking roll ( $\varnothing$ x w x b)	Item no. E-Kit		
			rechts	links	
31002844 <input checked="" type="checkbox"/>	421 with adapter 20 x 20 mm with adapter 25 x 25 mm	25 x 6 x 6	21BHR1503	21BHR1504	

Item no.	Dimensions [mm]						
	a	b	c	d	e	f	x
31002844 <input checked="" type="checkbox"/>	16	16	112.5	25	32.5	28.5	2.5
	20	20	112.5	25	32.5	28.5	2.5
	25	25	112.5	25	32.5	28.5	2.5



## MARKING ROLL Nr. 41

(for tool set 421)



Standard design	
flank angle	90°
dimension ( $\varnothing$ x width x bore, mm)	25 x 6 x 6
font	according to DIN 1451

## APPLICATION EXAMPLE MARKING

MARK YOUR WORKPIECE IN SECONDS.



➔ INTEGRATED INTO THE MACHINING PROCESS