



# MARKING TOOL SET 422

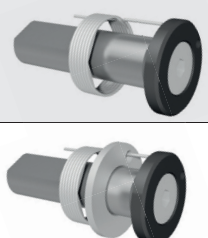
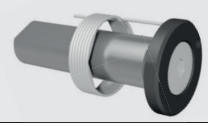

## Spring-return system



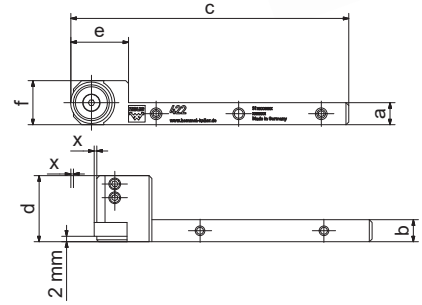
### PRODUCT FEATURES

- modular shank design
- compact design - optimized for Swiss type lathe applications
- top edge of shank = centre height
- set screws in shank for correcting alignment
- hardened pin
- exact positioning of the marking on the circumference of the workpiece
- marking up to a shoulder
- center height corresponds to the first marking point
- marking position individually adjustable
- sets in high quality packaging

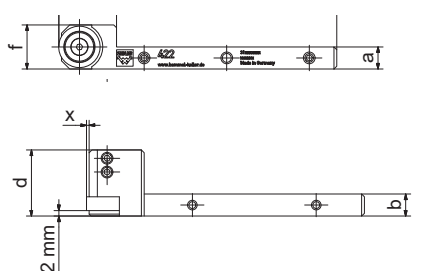
Available from stock

Item no. (right-hand version)	Item no. (left-hand version)	Model / Sets (with shank adapter)	Size Marking roll (Ø x w x b)	Item no. E-Kit		
				right	left	
31002843 <input checked="" type="checkbox"/> Tool for marking <b>up to a shoulder</b>	31002913 <input checked="" type="checkbox"/> Tool for marking <b>up to a shoulder</b>	422 with adapter 10 x 10 mm with adapter 12 x 12 mm with adapter 16 x 16 mm	15 x 5 x 6	21BHR1505	21BHR1506	
31002846 <input checked="" type="checkbox"/> Tool for marking <b>up to a shoulder</b>	31002914 <input checked="" type="checkbox"/> Tool for marking <b>up to a shoulder</b>	422 with adapter 10 x 10 mm with adapter 12 x 12 mm with adapter 16 x 16 mm	15 x 7 x 6	21BHR1507	21BHR1508	

Item no. (right-hand version)	Item no. (left-hand version)	Dimensions [mm]							
		a	b	c	d	e	f	x	
31002843 <input checked="" type="checkbox"/>	31002913 <input checked="" type="checkbox"/>	8	8	101	24	21	16	1	
		10	10	101	24	21	18	1	
		12	12	101	24	21	20	1	
		16	16	101	24	21	24	1	

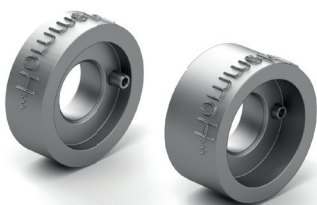


Item no. (right-hand version)	Item no. (left-hand version)	Dimensions [mm]							
		a	b	c	d	e	f	x	
31002846 <input checked="" type="checkbox"/> Tool for marking <b>up to a shoulder</b>	31002914 <input checked="" type="checkbox"/> Tool for marking <b>up to a shoulder</b>	8	8	101	24.5	21	16	1	
		10	10	101	24.5	21	18	1	
		12	12	101	24.5	21	20	1	
		16	16	101	24.5	21	24	1	



## MARKING ROLL Nr. 41

(for tool set 422)



Standard design	
flank angle	90°
dimension (Ø x width x bore, mm)	15 x 5 x 6 15 x 7 x 6
font	according to DIN 1451